

# BASEMENT

## BASEMENT:

**6.1 ACCESSIBILITY:** Basement is fully accessible, Basement is finished, Stairs and handrail serviceable.

**6.2 WALLS - TYPE:** Poured concrete.

**6.3 CONDITION:** Appears serviceable.

**6.4 BEAMS:**



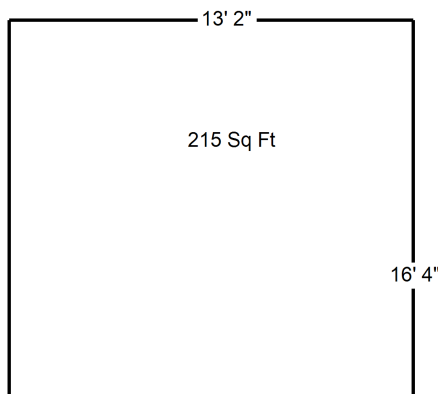
Appears serviceable, Beams were not fully visible due to finished areas of basement.

**6.5 FLOOR JOISTS:** Appear serviceable, The floor joists were not fully visible due to finished areas of basement.

**6.6 BASEMENT FLOOR:** Appears serviceable.

**6.7 COMMENTS:** The basement was dry at the time of inspection and moisture meter readings taken at the perimeter indicated normal moisture levels. Note: Long Island has high water tables and ferocious "Nor'easter" storms. It is inevitable that at some point we will have wet basements and wet crawl spaces.

### Interior Dimensions



Measurements Are Approximate